

**Targeted stakeholder engagement draft – Climate Change and Sustainability Strategy Framework 2020**

**Consultation draft structure**

**Part 1. The pathway to our Climate change and Sustainability Strategy**

1. Introduction
2. Have Your Say
3. Why do we need a strategy?
4. UK Policy Context
5. Regional Partnerships and Strategies
6. Working Together Locally
7. Consultation and strategy timeline

**Part 2. The Strategy Framework-**

1. The Vision for Lewes District
2. Local Action and Initiatives
3. Evidence Base
4. Our Approach to Offsetting
5. Action Areas
  - 5.1 Energy and the built environment
  - 5.2 Sustainable travel and air quality
  - 5.3 Biodiversity
  - 5.4 Agriculture and food
  - 5.5 Reducing Emissions from Waste
  - 5.6 Water
  - 5.7 Circular economy and community wealth

**Separate technical appendices**

Internal Carbon footprint report

## Part 1. The pathway to our Climate Change and Sustainability Strategy

### 1. Introduction

On the 15<sup>th</sup> July 2019 Lewes District Council formally declared a Climate Emergency at Full Council and committed to: “...Ensure that all strategic decisions, budgets and approaches to planning decisions are in line with a shift to net zero greenhouse gas emissions by 2030; Support and work with relevant agencies and stakeholders towards making the entire District zero carbon and climate resilient by 2030.”

We originally aspired to producing a full strategy by July 2020, planning to consult and develop the plan in the preceding months. The pandemic has indeed delayed our strategy publication but has led to a re-think of our approach which we believe will result in a stronger plan and more sustainable response that better reflects

our strategic ambition in relation to the current circumstances as well as our residents and stakeholders opinions and attitudes that may have changed as a result of this crisis.

It has also led to temporarily improved air quality, a reduction in emissions and an improved sense of community cohesion. Society has learned very quickly how to pull together for the greater good. Some outcomes we have seen could have taken years of encouragement to develop but have come together over days during this crisis and the Confederation of British Industry have found that businesses that have for years insisted their workforce travel miles to an office have realised that trusting their employees to work flexibly can actually improve quality of work.

We need to harness the positives of this situation and determine how best to take these on into the future and not revert to the old ‘business as usual’, encouraging support for a green restart and green economic recovery.

Our intention is this:

- To provide this draft framework for consideration by Cabinet in July 2020 along with the background evidence completed to date.
- To produce a formatted version of the framework to direct our public engagement work up to the end of October 2020
- To produce the final strategy for endorsement by Cabinet in February 20

## 2. Have your say

In this document we have set out why we are preparing a climate change and sustainability strategy through an introduction to the main national and regional strategies, this is provided to give you some background and context beyond our boundary.

Part 2, The Strategy Framework then follows, which sets out an initial draft 'vision' for the District and is followed by our 'action areas' each of which has draft goals and examples of actions we are currently undertaking.

Each section is followed by questions to help guide your responses but please do not feel constrained by them.

We are keen to receive views on any aspect of this framework and you are welcome to respond to any or all the questions we have set out.

We are happy to receive any general comments you may have regarding the climate change challenges faced by the district and your community, or any ideas and suggestions about any matters that you feel have not been fully addressed in this document.

This framework for our future strategy is designed to start a conversation about what our ambitions and targets should be. It is important that it also reflects what our communities are doing and can achieve. We acknowledge that we are all in this together and no one person or organisation can tackle climate change alone.

The targeted public and stakeholder engagement period will run from Monday 24<sup>th</sup> August 2020 to Monday 2<sup>nd</sup> November 2020. All responses should be received by 5pm on 2<sup>nd</sup> November 2020.

If you do not have internet access please telephone Kate Richardson on 01323 415202.

You can respond by:

- Completing the text boxes and returning by email to [xxxxx@lewes-eastbourne.gov.uk](mailto:xxxxx@lewes-eastbourne.gov.uk) or post to: Business Planning and Performance, Southover House, Southover Road, Lewes BN7 1AB,
- By attending an engagement event arranged through the Community Forum- [provide link/email] and submitting comments there

Please note that comments made through social media channels will not be regarded as a formal response. You are therefore encouraged to make your comments via the channels identified above.

### **3. Why do we need a strategy?**

The Climate Change and Sustainability Strategy will set out how the district Council addresses the causes and impacts of climate change in order to deliver against the declaration. It will contain key actions and milestones that the Council, our statutory partners, business, third sector and community partners will, working together, need to deliver in order to reach our net zero carbon target and elaborates on the actions being progressed.

The Council has a key role to play as a community leader and through the services we provide.

We must act now to mitigate the impacts of a changing climate, to adapt and manage the risks to service provision, local communities, the natural environment, infrastructure and businesses whilst taking a grasp of the multitude of positive opportunities that the changes we need to make will offer us.

The strategy, the action plan and carbon emission report will be updated and reported annually.

#### 4. UK Policy context

Various national targets and regulatory drivers have been created to incentivise action to avoid the potentially devastating impacts of climate change. These include:

The **UK Climate Change Act 2008** is the principle piece of legislation legally committing the UK to deliver net-zero emissions by 2050 against a 1990 baseline. It previously required an 80% emission reduction but was updated in 2019 after the Climate Change Committee produced a report called 'Net Zero- The UK's contribution to stopping global warming'. As a result the UK became the first major economy to commit to a net zero carbon target by 2050.

The 2016 **Paris Agreement**, ratified by the UK, has the aim to 'strengthen the global response to the threat of climate change by keeping a global temperature rise this century to well below 2°C above pre-industrial levels and to pursue efforts

to limit the temperature increase even further to 1.5°C above pre-industrial levels'.

The **Clean Growth Strategy** (2017) and **The Road to Zero** (2018) report sets out illustrative pathways as to how the Government plans to meet the legislated fourth and fifth carbon budgets through a transition to a low-carbon economy. Together they include ambitions to phase out petrol and diesel vehicles, improve the energy efficiency of homes and targets for low carbon electricity generation, smart grids and energy storage.

In early January 2018 the government's Department for Environment, Farming and Rural Affairs **released A Green Future: Our 25-Year Plan to Improve the Environment**. The plan sets out government action to help the natural world retain and regain good health, deliver cleaner air and water, protect threatened species and improve wildlife habitats.

10 key objectives fall from this which range from clean air and thriving plants and wildlife to mitigating and adapting to climate change and minimising waste.

**The Environment Bill 2020** will put the environment at the centre of policy making. It will make sure that we have a cleaner, greener and more resilient country for the next generation.

**The Agricultural Bill** will have the objectives of protecting the environment alongside ensuring food production, and rewarding those farmers who take the health of soil, the quality and management of water, and the abundance of pollinators seriously.

**The National Planning Policy Framework and the Building Regulations** (specifically Part L) are key to delivering the low carbon development agenda and are being updated and reviewed to progress the move to the **Future Homes Standard**.

## 5. Regional partnerships and strategies

National policies are subsequently translated into regional strategies that will work to deliver the large scale infrastructure changes and upgrades needed to enable our own local decarbonisation and economic regeneration. This strategy recognises those plans and the Council will work with these partners to ensure that our understanding of what is required for our communities is addressed, best practice is shared and economies of scale are achieved where possible.

Key regional strategies include:

- The **Draft East Sussex Environment Strategy** (2020) which seeks to ‘contribute to the emerging urgent global and local environmental challenges and to maximise the available opportunities.’ The strategy identifies local specific challenges and opportunities and has

identified the five priority themes of climate change, natural capital, air quality, water and resource efficiency.

- The **South2East Energy Strategy** (2018) was developed by three Local Enterprise Partnerships (LEPs), which are joint private / public organisations intended to drive economic growth in a broad geographic area encompassing Lewes District. The Strategy outlines a vision for achieving clean growth through the year 2050, with a focus on the power, heat and transportation sectors.
- The **East Sussex Local Transport Plan** (2011) runs up to 2026 and seeks to improve sustainable transport within the county and the **Transport Strategy for the South East** (due 2020) by Transport for the South East which seeks to work regionally refocusing the approach from ‘planning for

vehicles’, to ‘planning for people’, and ‘for places’

- Lewes District lies within the boundary of the Greater Brighton City Region which aims ultimately to bring jobs and prosperity to the area. Through the Infrastructure Panel, Lewes District will be involved in collectively delivering a variety of proposals through the **Greater Brighton Energy Plan** and **Greater Brighton Water Plan**
- Lewes sits within the **South Downs National Park** which has recently produced a **climate change adaptation plan**.
- **Sussex Natural Capital Investment Strategy (2019-2024 )** Produced by the Sussex Local Nature Partnership it is a plan to conserve, enhance and expand Sussex’s Natural Capital and ensure that Sussex residents share in the benefits provided by healthy, well-functioning ecosystems.

## 6. Working together locally

We can only deliver the strategy effectively by understanding all the aspects we can directly act on and those that we can only deliver by working with others in the public, private and voluntary sectors across the district. We recognise that we cannot continue ‘business as usual’ and that all our plans and strategies, and those of our suppliers and contractors must be reviewed in light of the climate emergency.

We do not have the powers or resources to do this alone. We cannot make the area resilient without effective partnership working to bring together local people and organisations to plan for, adapt to and own their future.

The council has set up a **Sustainability Expert Panel** of local expert individuals and organisations who will help to advise and guide the council using their expert knowledge and experience gained. The Council will work with the group as a

critical friend and will actively engage the group as this Strategy develops.

The Council is also facilitating the set-up of a **Community Climate Change Forum** that we hope will be set up by a local organisation to enable independence from the authority. The forum will provide a space for the community to engage with the climate change agenda and develop local action and ownership of the problem as well as the solutions. It will also enable a co-ordinated response to the council’s strategy proposals

The **East Sussex Youth Council** is the elected youth voice for East Sussex. It made ‘protecting the environment’ top of their list of priorities for 2020 mirroring the Youth Parliaments ‘Protect our Future’ campaign. The district council attended a meeting early in 2020 where it was agreed they would engage with us through the Community Forum process, in requesting expressions of interest to run the forum

we have made it a requirement that the forum should ensure the youth voice is represented on an equal footing with adults whilst ensuring their specific needs are met.

We are engaging with other young people’s climate and environmental initiatives across the district to ensure a broad range of views are represented.


Both the forum and panel will be a key part of the public engagement with this framework as well as for future updates and project development.

Internally the council has set up an **Officer Working Group** and a **Climate Change Scrutiny Panel**. Along with regular updates to Informal Cabinet it is proposed to update Cabinet 3 times per year including an annual full strategy and progress report in July each year.

## 7. Engagement and strategy development timeline

The timeline has been included below for you to see how we have got to this point of engagement and how we intend to move forward with the strategy production.

May	June	July	August	September	October	November	December	January & February 2021
Internal staff consultation	Scrutiny Panel	<b>Cabinet to agree engagement draft</b>	Engagement draft to be finalised and publicised no later than 24 <sup>th</sup> August	<b>Engagement period of 10 weeks</b>		Strategy drafting		<b>Final Strategy to Cabinet for approval February 2021</b>
	Officer Working Group			Community Forum convened for engagement		Further internal and key stakeholder engagement on first draft- mid November		
	Community Forum tenders evaluated	<b>Engagement draft to be formatted</b>		Officer Working Group				
		Sustainability Expert Panel		District footprint councillor workshop				
			Landowners and Agriculture workshop					
			Sustainability Expert Panel convened over each 'Action Area'					
			Scrutiny Panel convened for consultation					





## Part 2. The Strategy Framework

### 1. The vision for Lewes District

*By 2030 we will have a net zero carbon council and fully climate resilient, biodiversity-rich sustainable communities. Through our partnerships we will have enabled the district as a whole to progress to net zero carbon and started to address the ecological emergency.*

Lewes District is a mix of urban and rural communities, coast and countryside, modern and historic buildings, agricultural and industrial business.

**We have a beautiful district** but it can be congested at times, it contains pollution hotspots particularly in Newhaven and Lewes town, it has rural areas with limited public transport, it lacks comprehensive cycling and walking routes, it's vulnerable to flooding and is suffering biodiversity losses in line with the alarming national and international trends. It has areas requiring economic regeneration, it needs more affordable housing and we need to reduce income inequality.

As a result we accept and acknowledge that we have **a huge amount of work** ahead of us to meet our ambition of

becoming a net zero carbon and climate resilient council by 2030 and that we will be doing this with currently uncertain financial resources. We are however encouraged and spurred on by the **enthusiasm within our local communities** to aid us in meeting the challenge. We have seen how fast we can act and make huge changes to our society when faced with the life or death situation that the Coronavirus pandemic has and continues to pose us. We need to acknowledge that **climate change is part of this picture** which will eventually cause us to face similar situations in the future. In this case though we have more notice and awareness of what is coming and still have the chance to reduce the impacts, as long as we act now to cut emissions and

prepare our communities for the inevitable changes.

Our own experience of flooding within the district and the stark predications of the effects of sea level rise on our coastal communities in and around Seaford and Newhaven, and the impacts of cliff erosion in Peacehaven, drives our resolve to enable **climate resilient and sustainable communities**.

Arresting biodiversity losses is inextricably tied to climate resilience, flooding impacts, and the ability to achieve the desired sustainable, carbon neutral communities. Committing to **nature based solutions** is essential for our recovery from the current Covid-19 crisis, and to better avoid future pandemics

promoting healthy, thriving and resilient communities for the future.

The '**Declaration of the Climate Emergency**' is our public statement that work the Council and others, locally and nationally, already do to mitigate and adapt to climate change must be ramped up and progressed at pace. **But we cannot do this alone.**

We have committed to becoming a net zero carbon Council by 2030. This means

reducing our directly controllable emissions to as low as possible and then, if required, investing in solutions to reduce the remaining carbon emissions (offsetting).

Our approach to offsetting will be defined after consultation.

We have also **committed to support** and work with others to make the **district net zero carbon by 2030** though this target will be much harder to achieve.

We will use our influence and lobbying function to enable this and we will lead by example. We will work in partnership with the community to **break down current barriers** and enable delivery of projects.

**Question 1:**

- a. What do you think of the 'net zero carbon, climate resilient and sustainable communities' vision for the Council and the district?
- b. Do you think more specific priorities should be included within the vision? If you do, please explain what these are and why you believe they should be included.
- c. What concerns, if any, do you have about the vision for the Council and the district?

## 2. Local Action and initiatives

We know that there is a lot of work going on in the district, some of which we are involved in like the Sussex Flow Initiative or Refill Seaford and Newhaven. We would like this section of the strategy to highlight action and initiatives being led by our districts community organisations and we would like to give you this opportunity to tell us in your words about your project- it's likely to be a 2 page spread and we will choose a selection, ideally with an image for inclusion in the final strategy. We have included 2 examples below.

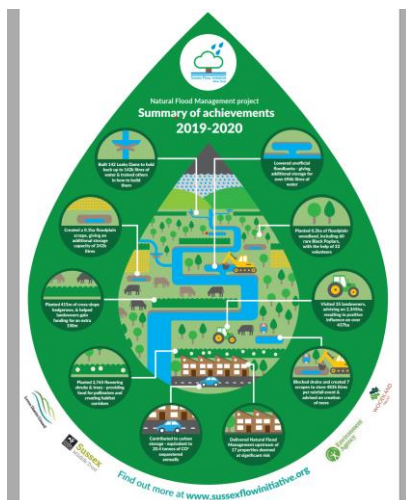
Example 1:

Refill Seaford & Newhaven: In January 2018 a group of local people decided to take action, having completed beach and beauty spot litter picks in the past we decided to set up a Facebook Group to raise awareness and to encourage people to reduce single-use plastic from their lives. The initial response has been encouraging from a variety of businesses, now we want to spread the word wider and involve more and more local organisations and businesses. The official launch was at Frankie's Beach café on Seaford Esplanade on 1st September 2018 mainly sponsored by South East Water and assisted by some great local volunteers.



Example 2:

Sussex Flow Initiative (SFI) is a natural flood management project in the River Ouse catchment, and is a partnership between Sussex Wildlife Trust, the Woodland Trust, the Environment Agency and Lewes District Council. The project was originally set up to see if Natural Flood Management (NFM) measures can create positive benefits for flooding, the environment and society in a lowland setting.



**Question 2:**

- a. Do you have any 100 word case studies or examples of local action or initiatives undertaken by community organisations within the district that you would like to share with us? **Please email these to xxxxxx**

### 3. Evidence Base

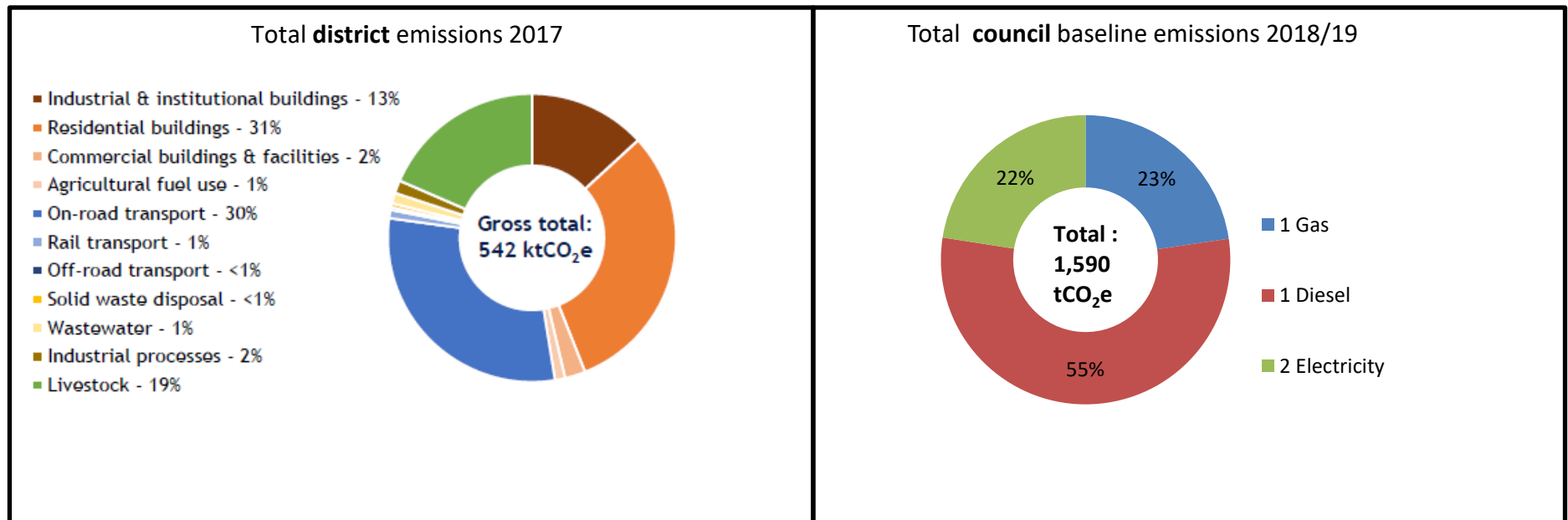
We shall provide a more detailed summary of the baseline evidence for the council's and the district's carbon footprint with an analysis of the pathway to meet our 2030 target as part of the final strategy.

Below is a summary of the sources of emissions from the district that may be useful for you in answering the consultation questions.

More information on the footprints of both the district and the council can be found on our website here [\[insert link\]](#).

The council's carbon footprint is for the year 2018/19 and has been calculated to be 1,590 tonnes CO<sub>2</sub>e (carbon dioxide equivalents)

The district's carbon footprint is for 2017 (the most recent data available) and has been produced by our consultants Anthesis. This work will feed into much of the planned engagement work we are doing and you are welcome to view the full technical report on our website. They have completed detailed analysis of the districts emissions of 542,000 tonnes CO<sub>2</sub>e (542ktCO<sub>2</sub>e).



#### 4. Our approach to offsetting

In order to achieve net zero carbon it is expected that the Council will have to carry out some degree of offsetting.

Offsetting is where we pay an amount of money towards projects that reduce carbon emissions somewhere else to the value of the emissions we are still generating.

We would like to get your views and ideas on how we should do this.

**Question 3:**

- a. Do you think it is acceptable to use council funds to pay for offsetting projects?  
Please explain your answer.
- b. Should offsetting projects only be local, or is it acceptable to pay for projects elsewhere, for example in Asia, if the financial cost is lower?  
Please explain your answer.
- c. What would you think if the Council offset our Scope 3 emissions (those which we cannot control very easily and do not form part of our baseline)?

## 5. The Action Areas

The action areas set out in this Strategy provide the framework through which we will focus our efforts in reducing emissions and improving climate resilience.

Some areas naturally interlink, for example the built environment will naturally link with aspects of sustainable transport, so some actions may impact on more than one area. We attempt to clarify what we are including within each area as we go through.

Each section outlines some of the priority actions we are currently undertaking in 2020 so you can see that work has not stopped despite the delay to the strategy.

We would like to add milestones to each area of work to track our progress towards 2030. These would be actions that we need to achieve before we can do something else or are key to achieving net zero carbon.

Specific targets also need to be developed to monitor our progress and provide something tangible for us to aim for.

Each section has a question on actions and targets to gauge what key changes you feel need to be made and by when.

### **The action areas are:**

- Energy and the Built environment
- Sustainable Transport and Air Quality
- Biodiversity
- Agriculture and Food
- Reducing Emissions from Waste
- Water
- Circular Economy and Community Wealth

## 5.1 Energy and the Built Environment

This section covers all the energy consumed by everyone within our district with regards to heating and powering their homes and businesses. It also covers areas where the council can influence, such as through planning policy and our own asset management strategy.

### **Actions we are currently undertaking:**

- Developing pipeline of projects to deliver the Greater Brighton Energy Plan and the South2East Energy Strategy
- Ensuring that 100% of electricity consumed by the council is from renewable sources
- Reviewing all existing council housing stock to enable improving energy efficiency and making best use of resources to create quality, sustainable homes for the future
- Promoting private sector housing retrofit schemes
- Enabling the expansion of renewable community and municipal energy schemes

- Developing an asset management strategy on the corporate estate to reduce emissions and deliver efficiencies
- Initiating and developing a partnership with other housing stock holding authorities to share best practice and learning on decarbonising our housing, green tech and nature based solutions
- Engaging with existing local energy initiatives
- Implementing our sustainable council homes building programme
- Progressing with the Local Plan Part 1 review

### **Strategic Goals:**

1. We will have built and encouraged affordable, energy efficient, climate resilient and adaptable locally sourced and provided housing that provides multifunctional green infrastructure
2. We will have shifted the district to low and zero carbon heat and electricity
3. We will have the greenest Local Plan we can and actively engage with developers to produce low carbon developments using nature based solutions, in line with our vision for the district

### **Question 4:**

- a. What are your views on the strategic goals for 'Energy and the Built Environment'?
- b. What actions would need to be completed to fulfil the goals? For example, the local plan part 1 review is a key action to be completed because without this, we do not fully understand the gaps in our planning policies that will stop us from reaching our net zero carbon goal, and our goal to have the greenest and most sustainable local plan we can.
- c. Should we have any targets, and if so, what should those be? For example – should we commit to have solar PV installed on every suitable social housing property by 2025?
- d. Given the authority's house building target of an average 345 new dwellings per year, what are your views on the following possible building strategies: maximise infilling within existing settlements; expansion of existing settlements; development of a new 'garden village'.



## 5.2 Sustainable travel and air quality

This section about transport is largely something that we will influence and we will facilitate change where we can by working with the community to be clear about what is needed to achieve the net zero goal for Lewes District. For example installing electric vehicle charge-points on the roadside requires East Sussex County Council involvement but we can install points within our carparks and in conjunction with our neighbouring authorities we can work to make car charging as easy as possible for residents and businesses enabling a smooth transition from traditionally fuelled vehicles.

We will lead by example with regards to our own fleet of vehicles especially in Waste.

### Actions we are currently undertaking:

- Enabling the re-purposing of road space through working with the County Council, to favour pedestrians and cyclists to enable a green re-start during the Covid-19 recovery period
- Requesting East Sussex County Council support and action on on-street electric vehicle charging
- Performing analysis on existing regional transport strategies and if needed develop a local transport strategy
- Updating the Air Quality Action Plan for Lewes

- Working to deliver the Newhaven Air Quality Action Plan
- Preparing a plan to make more sustainable use of our carparks to encourage and enable sustainable travel, for example by providing bike storage and more EV charge-points.
- Exploring opportunities for bike sharing, car clubs and electric vehicles for people and deliveries
- Setting out the corporate fleet route map to zero carbon
- Influencing the local walking and cycling strategy
- Producing the Annual Air Quality Status Report

### Strategic Goals:

We will have improved air quality and reduced carbon emissions by;

1. reducing reliance on car and need for personal car ownership;
2. improving the rural transport network;
3. encouraging more cycling and walking;
4. Improving infrastructure and reducing barriers to mobility;
5. enabling the uptake of alternatively fuelled vehicles.

### Question 5:

- a. What are your views about the strategic goals for 'Sustainable travel and transport'?
- b. What actions would need to be completed to fulfil the goals? For example a date by which we need to have increased the rural bus network to be fit for purpose?
- c. Should we have targets, and if so, what might these be? For example – should we commit to have a certain number of electric vehicle charge-points?
- d. How can the Council encourage sustainable low carbon travel? Is there anything we should not be doing?

### 5.3 Biodiversity

When we talk about biodiversity we are including all the natural flora and fauna we would expect to find within the district.

#### **Actions we are currently undertaking:**

- Completing the Council’s Biodiversity Strategy
- Implementing the Pesticides and Pollinators Strategy
- Facilitating a programme of tree, hedge and wildflower planting
- Promoting wild flowers, scrubland and other natural habitats on nature-denuded land and verges.
- Investigating the potential for offsetting through investing in natural capital
- Developing the local plan review to ensure that planning policies enable biodiversity net gain’ through a dedicated supplementary planning document (SPD)
- Exploring opportunities for re-wilding

#### **Strategic Goals:**

1. We have implemented the Biodiversity Strategy
2. All developments achieve appropriate and well considered net gains in biodiversity working at a landscape scale.
3. We have increased nature-rich habitats on Council owned and managed landholdings.
4. We have educated, engaged and enabled community led nature based projects
5. We have the greenest Local Plan we can and have actively engaged with developers.
6. Nature-rich and priority habitat has increased overall throughout the district.
7. We are embedded in partnerships that enable investment in natural capital across the district

#### **Question 6:**

- a. What are your views on the strategic goals for ‘Biodiversity’?
- b. What actions would need to be completed, and by when, to fulfil the goals?
- c. Should we have targets, and if so, what should these be? For example should we aim for a specific amount of land to be re-wilded?
- d. What can the Council do to encourage biodiversity? Is there anything we should not be doing?

## 5.4 Agriculture and food

We have little direct control over emissions from this area but we can facilitate the conversation with landowners and co-ordinate a local food economy in partnership with other organisations and neighbouring authorities. We can also encourage and facilitate linking this area with other action areas such as biodiversity and community wealth building.

### **Actions we are currently undertaking:**

- Complete a 2020 Autumn workshop with stakeholders to understand and enable reduction of emissions from agriculture
- Work up plans to build on the local food networks developed as a result of Covid-19 initiatives
- Starting to explore the potential for a local food economy
- Continuing to provide allotments
- Supporting community food production

### **Strategic Goals:**

1. We have fully engaged and supported The Agriculture Bill and attached schemes such as ELMS as and where possible. We have helped protect the environment and produced food, whilst taking care of the health of soil, water and pollinators.
2. We have influenced conditions for the reduction in emissions from agriculture and food production.
3. We have enabled the increase in local community food production and resilience and its local distribution to provide seasonal, healthy and affordable food.
4. We have influenced the conditions for the production of low chemical ecologically sound agriculture in the district
5. Articulated a sustainable food strategy for Lewes District and is shaping the East Sussex and Greater Brighton strategic approach

#### **Question 7:**

- a. What are your views on the strategic goals for 'Agriculture and Food'?
- b. What actions would need to be completed to fulfil the goals?
- c. Should we have targets, and if so, what might these be? For example should we seek to increase accessibility to local food by a certain amount?
- d. What can the Council do to encourage local food production, nature friendly farming and a reduction in agricultural emissions? Is there anything we should not be doing?

## 5.5 Reducing Emissions from Waste

Within this area we include reducing the amount of waste generated in general from residents, visitors and businesses. We also include work to increase the recycling rate and the emissions from dealing with waste. This section naturally crosses over with 5.2 Sustainable travel and air quality when it comes to transporting waste so our fleet is referred to in both sections, however this section 5.5 will be home to the most detail about how we plan to decarbonise our waste collection vehicles.

### **Actions we are currently undertaking:**

- Reviewing waste and recycling operations for efficiencies
- Reviewing waste and recycling infrastructure in the district (depot and tipping facilities)
- Exploring a phased approach to improving recycling and reducing waste
- Preparing a communication strategy
- Continuing with our planned 2020/21 engagement activities and communications on waste reduction
- Exploring how we can reduce the waste from development and construction and how materials can be re-used.
- Preparing the waste and recycling fleet roadmap to zero carbon through evaluating our options up to 2030 including the consideration and costing of electric and hydrogen technologies.

### **Strategic Goal:**

1. To have reduced emissions from waste collection and associated emissions from dealing with waste
2. To have reduced the amount of waste generated by the district's residents, businesses and visitors
3. We will have increased the proportion of the waste collected by the council that is recycled and reduced the emissions from this activity where we can influence and control this

#### **Question 8:**

- a. What are your views on the strategic goals for 'Reducing Waste'?
- b. What actions would need to be completed to fulfil the goals?
- c. Should we have any targets, and if so what might these be? For example, we currently have the aim to have our recycling rates be in the top 25% of authorities nationally.
- d. What can the Council do to reduce emissions from waste? Is there anything we should not be doing?

## 5.6 Water

This action area covers the full spectrum of water use and impacts within the district. It covers water consumption as well as flooding from rivers, surface water and the sea and also includes coastal erosion.

### **Actions we are currently undertaking:**

- Determining the emissions from council water consumption
- Key flooding projects such as Sussex Flow Initiative
- Determining how we strengthen water consumption targets in planning policy and how we include policies on permeable surfaces and rain gardens
- Reviewing the future of the coast at Portobello Works with Southern Water, ESCC and the EA.
- Determining how we repair coastal defences at Peacehaven.
- Developing projects as part of the Greater Brighton Water Plan
- Developing new coastal erosion policies as part of the local plan part 1 review
- Ensuring the final stages of the flood defences in Lewes are put in place

### **Strategic Goals:**

1. Water consumption in the district has reduced and our water resources are conserved and protected.
2. We will have well managed and protected waterways and coastal areas that provide benefit to residents and the natural environment
3. We will have adapted communities to be resilient against flooding and coastal erosion due to increased sea level and severe weather events as a result of climate change, using nature based solutions where possible.

#### **Question 9:**

- a. What are your views on the strategic goals for 'Water'?
- b. What actions would need to be completed to fulfil the goals?
- c. Should we have targets, and if so, what might these be?
- d. What more can the Council do with regards to flooding, coastal erosion and water use? Is there anything we should not be doing?

## **5.7 Circular economy and community wealth**

Community wealth building involves a people-centred approach to local economic development which re-directs wealth back into the local economy. The circular economy is the idea of eliminating waste and re-using resources so taking these two approaches together supports local businesses and employment opportunities whilst delivering community benefit and reduced carbon emissions. Covid19 has made this work even more important and the role of sustainable community wealth building in our recovery plans is paramount.

### **Actions we are currently undertaking:**

- Carrying out Local economic analysis to identify the impact of Covid-19 on the Lewes economy and on the livelihoods of different sections of the population;
- Identification of priority areas for recovery action across our community that focus on livelihood and moving us towards our sustainability goals faster.
- Development of a recovery to reform action plan. This plan will identify where council assets (investments, spending on goods and services, recruitment and land and property) could be directed to sustain and grow socially, economically and environmentally generative local organisations
- Exploring opportunities for a district anchor institution approach to economic recovery, aimed at ensuring that all public money spent in Lewes is directed at generating maximum local social, economic and environmental benefit.
- Developing the case for decarbonising 35,000 council homes across seven Sussex authorities and using this scale of investment (derived from existing repairs and maintenance budgets, estimated at £1bn) to create a strong market for locally owned and committed firms in the construction sector able to service this demand.
- Working with FE providers to develop a workforce of the future that can deliver green technologies.
- Ensuring our recovery plans are developed with local community, enterprise and public sector partners and feed into wider Greater Brighton and East Sussex partners.
- Piloting a scheme in Newhaven to encourage local jobs and apprenticeships in construction and development.

**Strategic Goals:**

1. The Council will be using its financial resources as locally as possible
2. The Council has a sustainable procurement policy that facilitates local supply chains and encourages a circular economy
3. Investment has been made into the local urban and rural economies increasing local employment opportunities and reducing income inequality.
4. We will have an expanding clean tech and creative sector
5. We have developed our local economies, including the Newhaven Enterprise Zone in partnership with the Greater Brighton Economic Board
6. LEAP continues to support business start-ups
7. The district, including rural communities, has access to high quality broadband and network services.
8. Local skills, supply chains and employment opportunities are improved as a result of our partnerships with East Sussex College Group, public sector organisations, social enterprises, cooperative businesses, as well as other forms of business, particularly focussing on clean, green technologies.

**Question 10:**

- a. What are your views on the strategic goals for 'Circular Economy and community wealth'?
- b. What actions would need to be completed to fulfil the goals?
- c. Should we have targets, and if so, what might these be?
- d. What role do you think the Council's should play with regards to community wealth building and the circular economy?
- e. What are your views on tourism and the visitor economy within the district?

**Question 11:**

Do you have any other comments to make regarding the climate change and sustainability strategy for Lewes district?

**Thank you for taking the time to read this document and for taking part in the development of our climate change and sustainability strategy.**